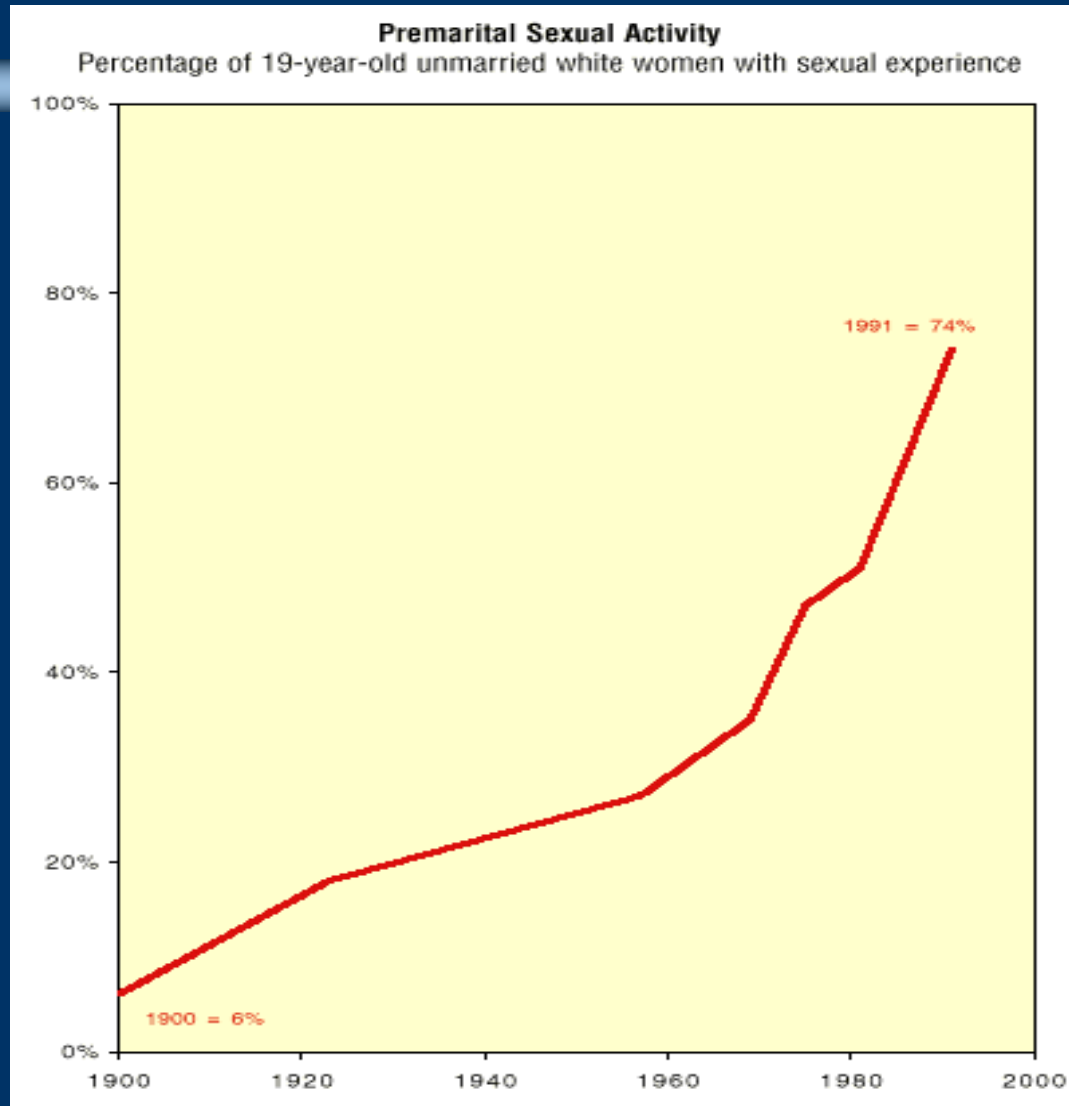


Medical Costs of the Sexual Revolution



Dr. Quentin L. Van Meter, M.D.
President of the American College of Pediatricians
Ruth Institute Summit July 17, 2021

Female Sexual Activity Before Marriage



Female Sexual Activity Before Marriage

Table 1: The Distribution of Women's Premarital Sex Partners, by Marriage Cohort

	1970s	1980s	1990s	2000s	2010s
0 partner	21%	17%	14%	12%	5%
1 partner	43%	36%	26%	21%	22%
2 partners	16%	15%	13%	13%	12%
3 partners	8%	11%	11%	11%	11%
4-5 partners	6%	12%	16%	17%	18%
6-9 partners	4%	5%	11%	13%	14%
10+ partners	2%	4%	10%	14%	18%
total	100%	100%	100%	100%	100%
N	268	1,921	4,312	3,598	273

<https://ifstudies.org/blog/counterintuitive-trends-in-the-link-between-premarital-sex-and-marital-stability>

Medical Costs of the Sexual Revolution

- 1) Contraception**
- 2) Teen pregnancy
& abortion**
- 3) STIs, PID &
Infertility**
- 4) Cancer**
- 5) Depr & Suicide**
- 6) Intimate Partner
Violence (IPV)**
- 7) Incr. same-sex
sexual behavior**
- 8) Transgendering
of children**

Hormone based Contraception (Pill, Patch, Ring, Shot, IUD)

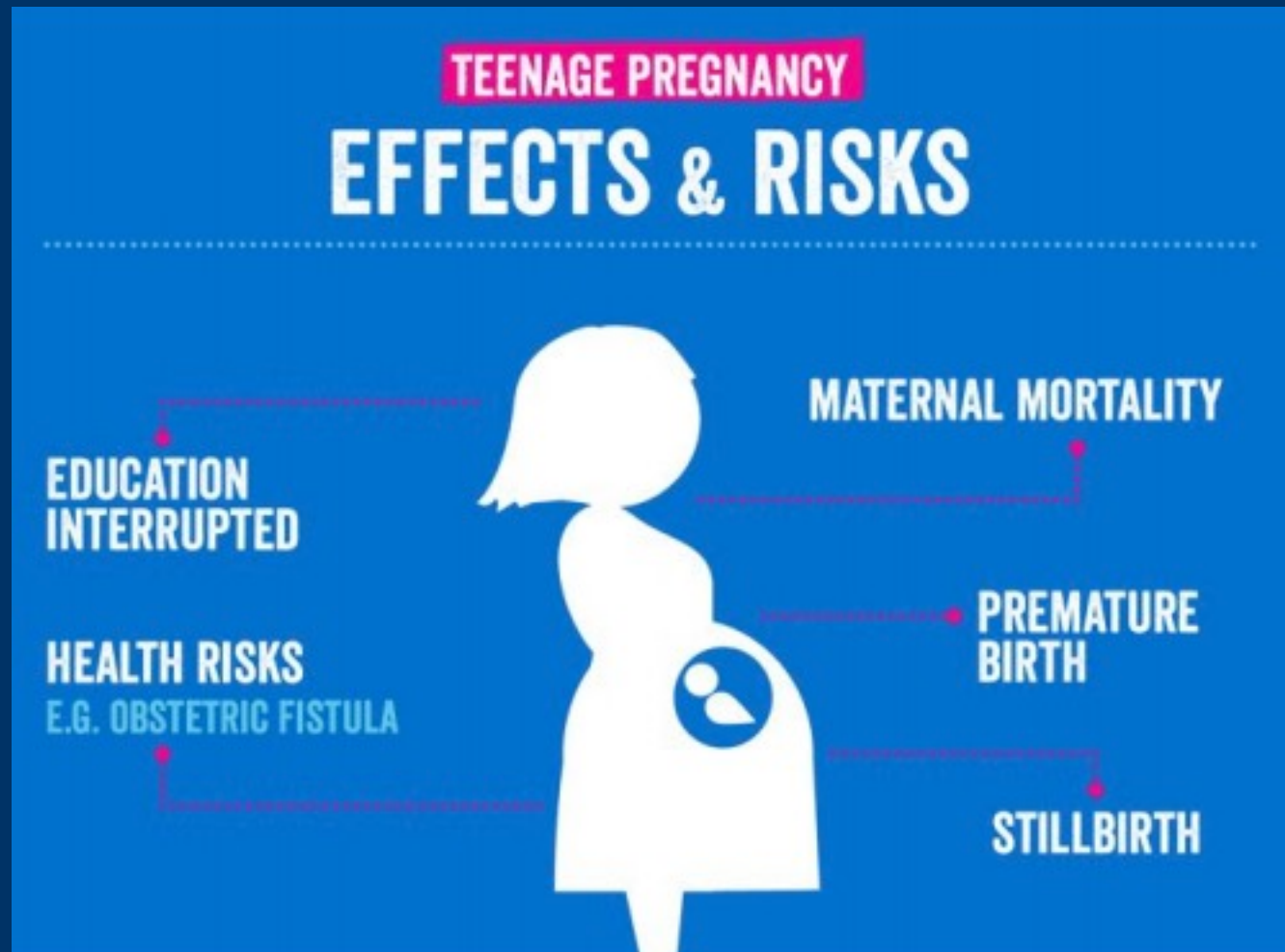


- 1) Abortifacient: prevent implantation**
- 2) Heart attacks & Strokes**
- 3) Cancer of breast, liver, cervix**
- 4) Incr. risk of HIV transmission**
- 5) Depression/Mood Disorders**
- 6) MS/Lupus/Inflam. Bowel Disease**
- 7) Interstitial Cystitis**
- 8) Osteoporosis**

<https://www.regulations.gov/document?D=FDA-2019-P-2289-0001>

Teenage Pregnancy

In 2017 made up 5% US births

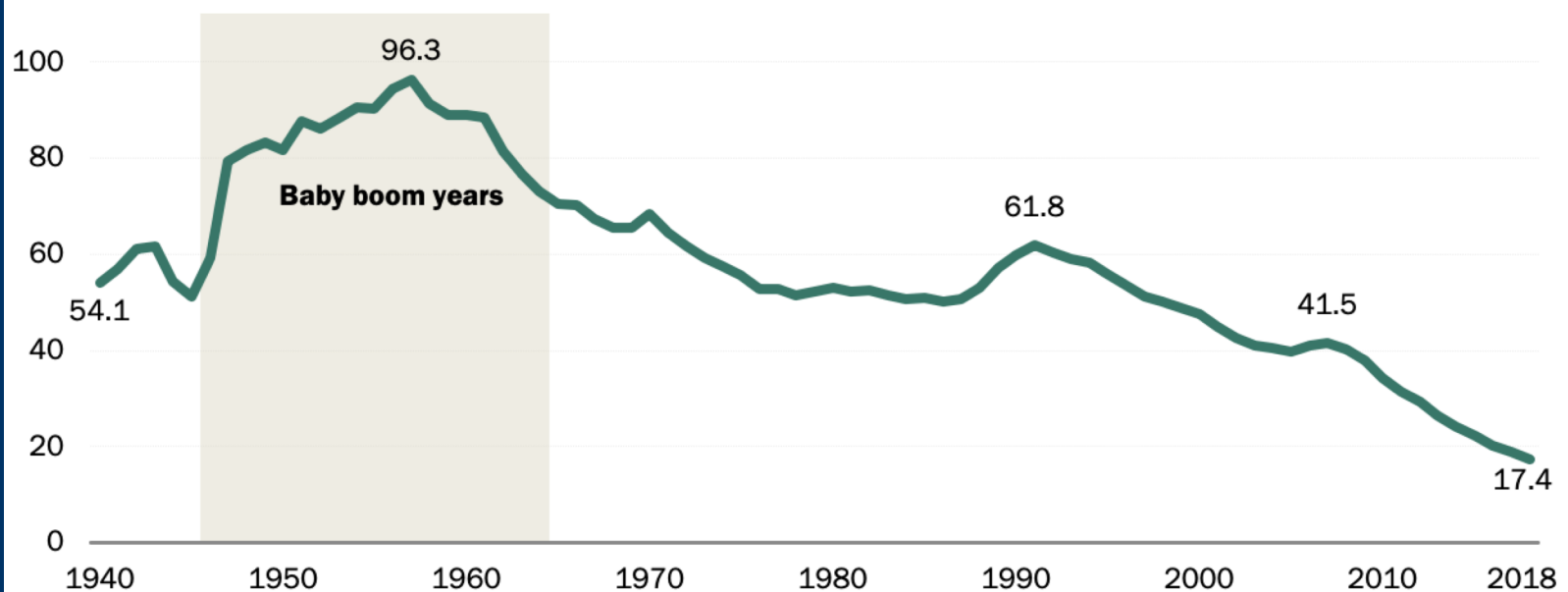


Teen Pregnancy Rates Decline

abstinence, birth control & abortion

U.S. teen birth rate has fallen dramatically over time

Births per 1,000 females ages 15-19



Note: Data labels shown are for 1940, 1957, 1991, 2008 and 2018. Teens younger than 15 not included. Data only accounts for live births and does not include miscarriages, stillbirths or abortions.

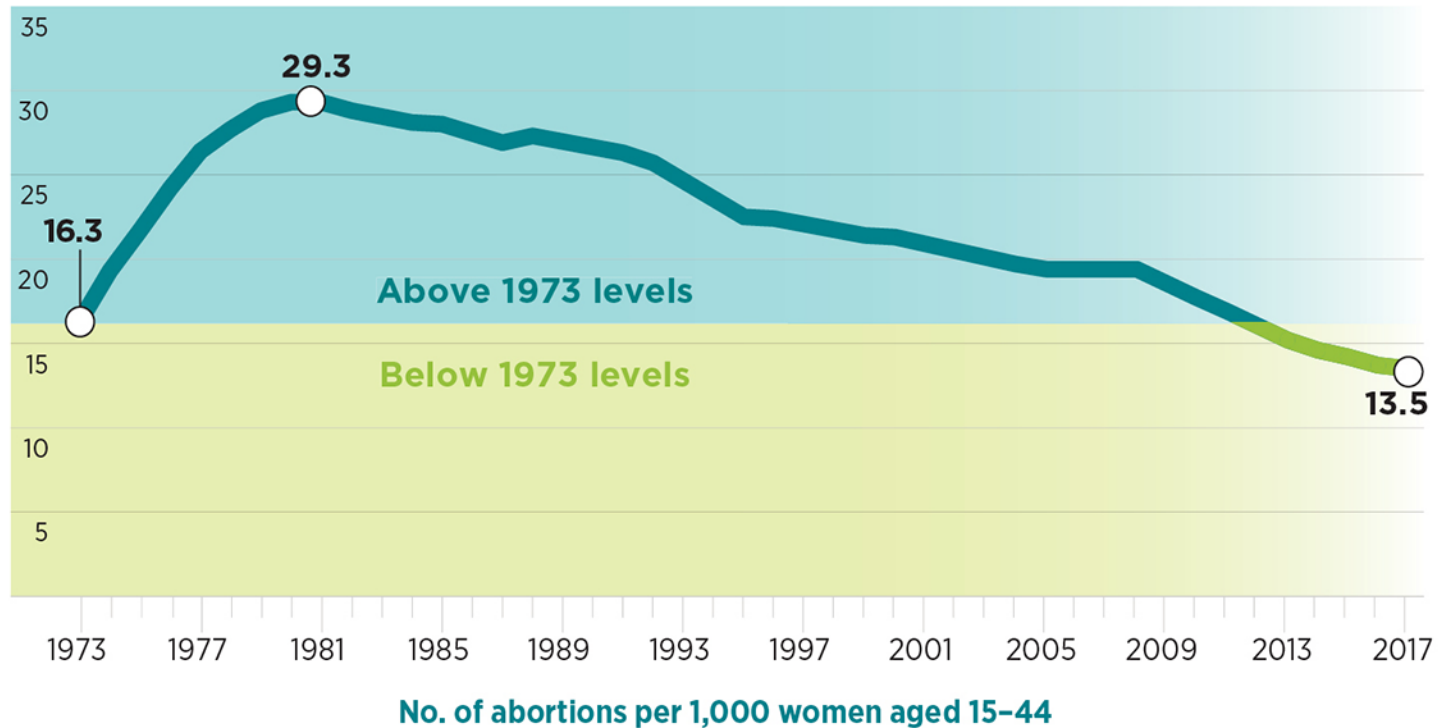
Source: National Center for Health Statistics published data.

PEW RESEARCH CENTER

Abortion

TRENDS IN ABORTION

The U.S. abortion rate reached a historic low in 2017.



Abortion

#1 Cause of Death Globally

- **50 million babies lost annually around the world**
- **8 % of pregnancies in the U.S. end in abortion**
- **24% of US women will have an abortion by age 45 years**

Abortion

Teen women ~ 12%

- **Increased physical complications**

- **2 X's more cervical lacerations**

- **Higher infection rates**

- **More likely → mental illness**

- **3 X's more likely → admitted mental hospital**

- **2 – 4 X's more likely → suicide**

Abortion and Breast Cancer

- ❑ **An abortion prior to 32 weeks gestation, disrupts the normal hormonal maturation of breast cells during pregnancy, and leaves cells more susceptible to becoming cancerous in future.**
- ❑ **29 % increased risk of breast cancer among women who abort as teenager**

Sexually Transmitted Infections

- **1970**
 - **3 main STDs**
 - **Syphilis, gonorrhea, chlamydia**
 - **Bacteria cured with antibiotics**
- **2020**
 - **Over 20 STDs**
 - **Antibiotic Resistance Growing**
 - **HIV/ Hepatitis A & B / Herpes / HPV**
 - **Viruses = No Cures**



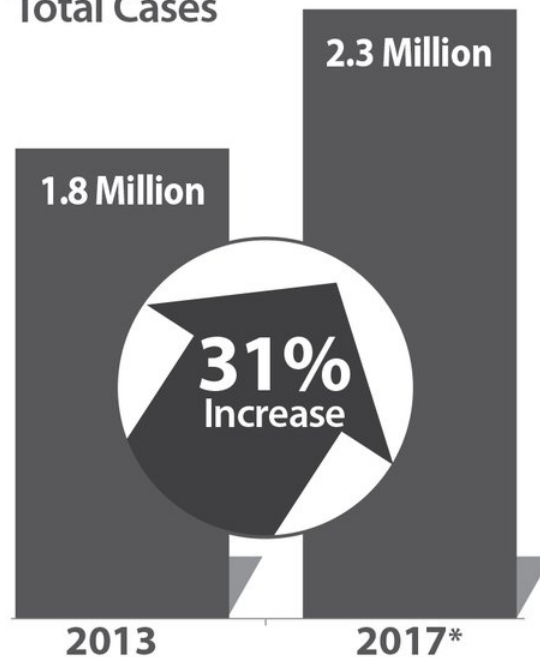
Sexually Transmitted Infections

- ❑ **CDC 2021 - STIs increased for 6th yr in a row**
- ❑ **CDC estimates > 20 million new STD infections annually**
- ❑ **Cost of STDs to the US gov't: over \$16 billion annually**

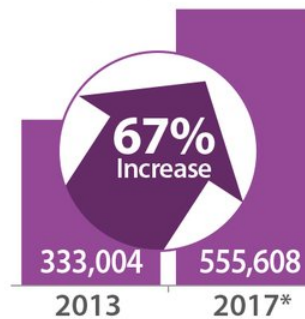
THE U.S. IS EXPERIENCING STEEP, SUSTAINED INCREASES IN SEXUALLY TRANSMITTED DISEASES

Combined diagnoses of chlamydia, gonorrhea, and syphilis **increased sharply over the past five years**

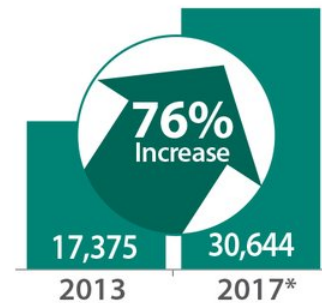
Total Cases



Gonorrhea



Syphilis



Chlamydia

1.7 MILLION

In 2017* chlamydia was the **most common condition** reported to CDC

*Preliminary data

For more information, visit
cdc.gov/nchhstp/newsroom



U.S. Department of
Health and Human Services
Centers for Disease
Control and Prevention

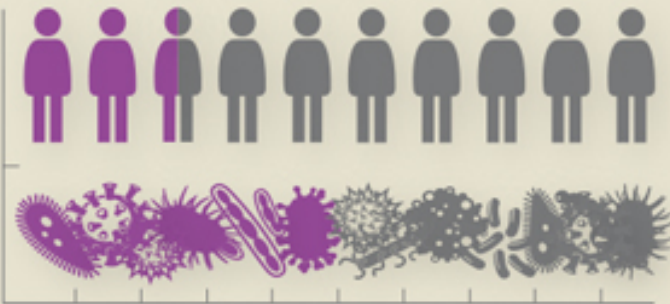
STI → PID → INFERTILITY

SEXUALLY TRANSMITTED INFECTIONS AMONG YOUNG AMERICANS

Youth bear disproportionate share of STIs

Americans ages 15-24 make up just **25%** of the sexually active population

But account for **50%** of all STIs



There are about **20 million** new STIs in the U.S. each year

Many do not know they're infected because STIs often have no symptoms

Data are cases among youth ages 15-24

1.8 million total

55% diagnosed

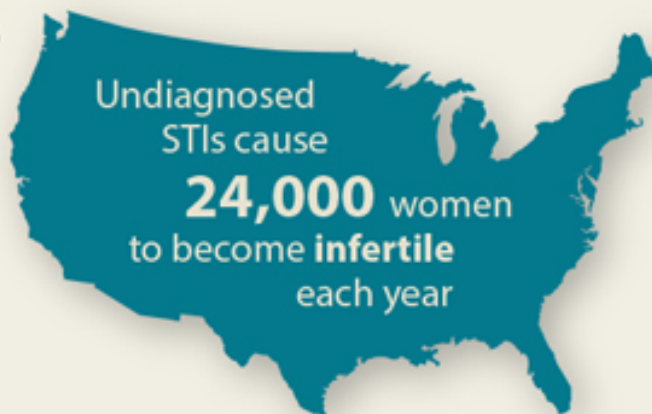
570,000 total

35% diagnosed

Gonorrhea

Chlamydia

Consequences can be severe for young women



Ages 15-24

Young people heavily affected by most STIs

Depression & Suicide: the Emotional STIs



- **Depression incr. suicide risk by factor of 12**
- **Suicide is 2nd leading cause of death for 15 - 24 year olds**

Teen Sexual Activity → Depression & Suicide

- **Sexually active teen girls are 3-6 times more likely to attempt suicide than abstinent peers**
- **Sexually active teen boys are 7 times more likely to attempt suicide than abstinent peers**

Family Structure, Sexual Rev & Suicide

- **Sexual Revolution → broken homes = greater suicide risk**
 - **38% of teens in stepfamilies**
 - **20% in single parent homes**
 - **9% in intact families**

Intimate Partner Violence

- **Affects millions of Americans**
- **1 in 4 women**
 - **Over 43 million women**
- **Nearly 1 in 10 men**
 - **38 million men**

#StopIPV

24

Americans experience
Intimate Partner Violence
every minute
every day



Intimate Partner Violence

- **Causes physical injury**
- **41 % of female IPV survivors and 14 % of male IPV survivors experience physical injury**
- **16 % of homicides = IPV**



LGBTQ+ identified Sexual Revolution's Biggest Victims

Population at Greatest risk for

- 1) Teen Pregnancy** (2 X's more likely to experience or impregnate than sexually active OSA peers)
- 2) STIs & HPV associated cancers**
 - Mouth, throat, cervical & anal cancers
- 3) Mental illness & Suicide**
 - 60% LGBTQ youth versus 20% gen. pop.
- 4) Intimate Partner Violence**
 - 2-3 X's greater

Rise in LGBT identification among Millennials in 2018

- **9% Millennial adults**
- **5.1% of women**
- **3.9% of men identify LGBT**

OF THE 37,968 NEW HIV DIAGNOSES IN THE UNITED STATES (US) AND DEPENDENT AREAS IN 2018:

69% WERE AMONG GAY, BISEXUAL, AND OTHER MEN WHO HAVE SEX WITH MEN



24% WERE AMONG HETEROSEXUALS



7% WERE AMONG PEOPLE WHO INJECT DRUGS



Psychopathology & ACEs Precede LGBTQ

- **Kaiser 2019 Trans-ident. Youth Study:**
 - **Psy. disorders 7X's higher overall**
 - **Psy. hospitalizations 22-44 X's higher**
 - **Self-harm 70-144 X's higher**
 - **Suicidal ideation 25-54 X's higher**
- (PRIOR to Transgender belief)**
- **Andrea Roberts 2013 study:**
 - **Adverse Childhood Events/Sexual abuse could account for 50-100% of what causes a youth to develop SSA.**

Top reason for LGBTQT suicide

- **Stress from romantic partners NOT societal rejection**
- Skerrett D, et al. “Suicides among lesbian, gay, bisexual, and transgender populations in Australia: An analysis of the Queensland Suicide Register.” *Asia-Pacific Psychiatry*, April 2014. DOI: [10.1111/appy.12128](https://doi.org/10.1111/appy.12128)

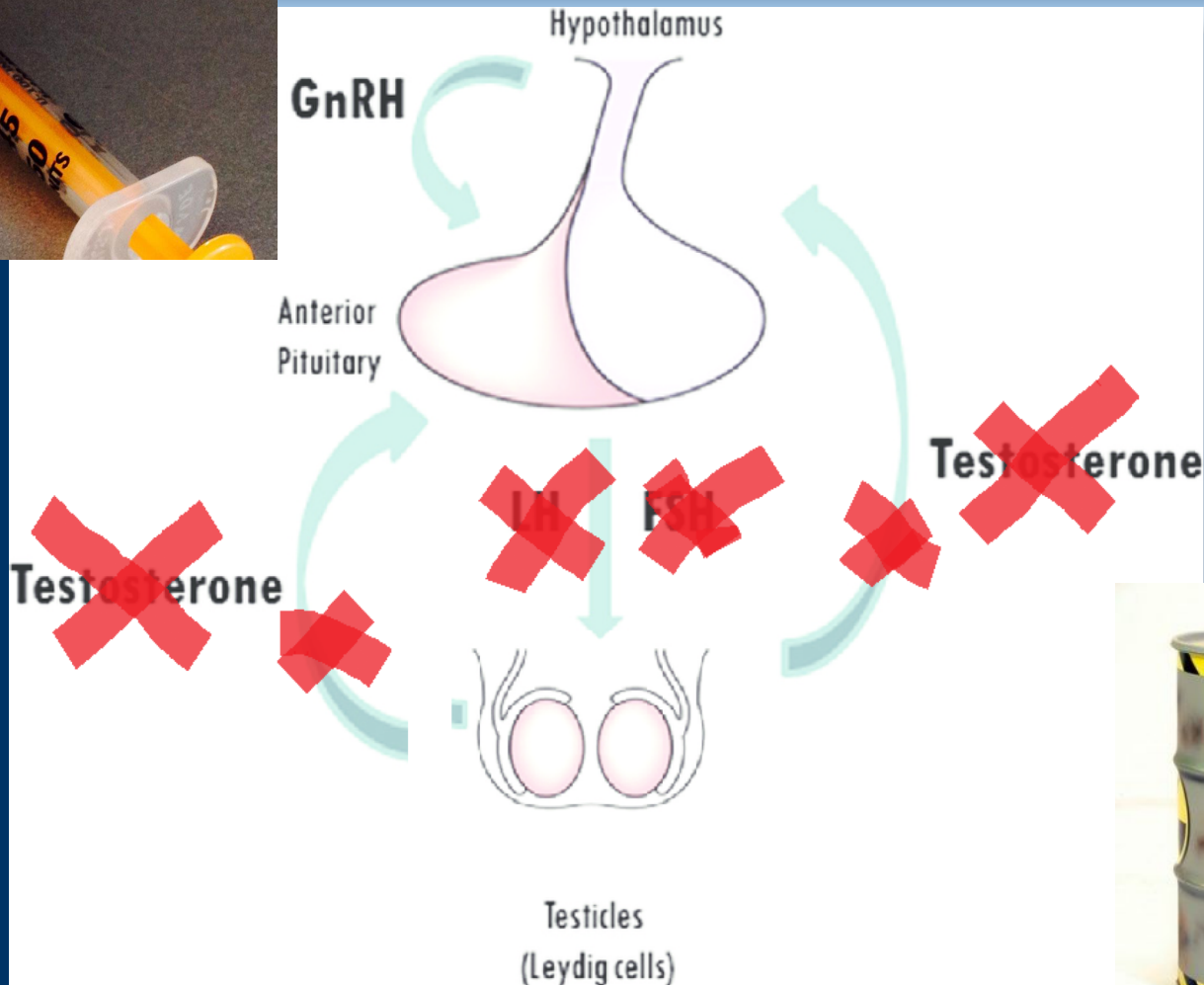
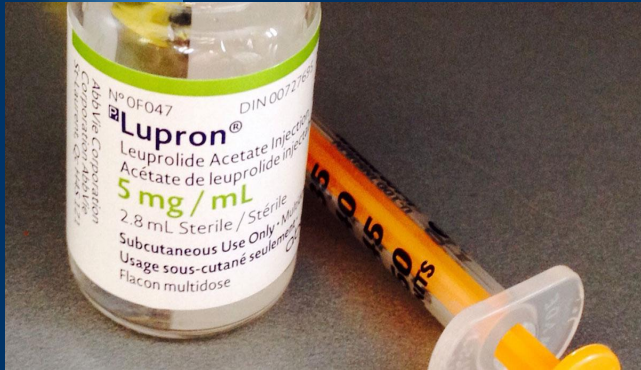


Transgendering Children

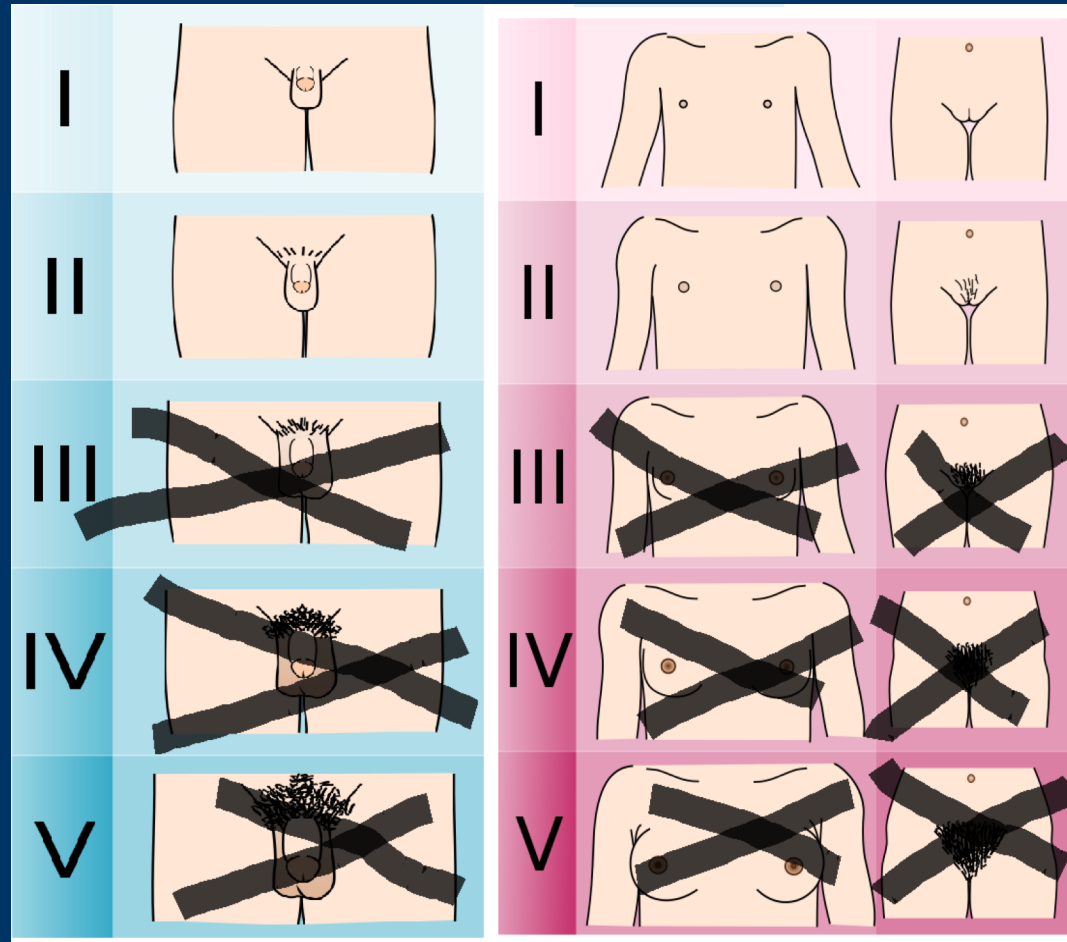
- 1) **Cultural indoctrination**
- 2) **Social Transition (“drag”)**
- 3) **Puberty Blockers**
- 4) **Cross Sex Hormones**
- 5) **Surgical Mutilation**



Puberty Blockers Cause a Disease State



Frozen Sexual Development





Blocking Normal Puberty



Female

Menopause-like state

Block normal breast development

Sexual dysfunction as adult

Prevent ovulation - infertility

Disrupt normal brain development

**Disrupt normal bone development
= Inc. Fracture Risk**

Male

Stunt penile & testicular growth

Sexual dysfunction as adult

**Prevent spermatogenesis -
infertility**

Disrupt normal brain development

**Disrupt normal bone development
= Inc. Fracture Risk**

Neuropsychological Effects of Puberty Blockers (Lupron)

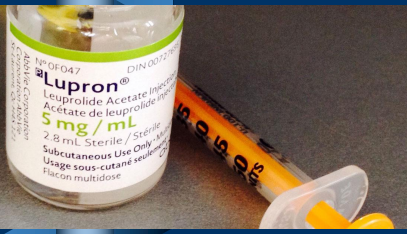
- 1) Emotional lability, mood changes, nervousness, anxiety, agitation, confusion, delusions, insomnia, depression**
- 2) “Monitor for development or worsening of psychiatric symptoms.”**

Tavistock and Portman GIDS UK*

Children reported greater self harm on blockers

Girls exhibited more behavioral and emotional problems, greater dissatisfaction with body on blockers

*** Michael Biggs. "Tavistock's Experimentation with Puberty Blockers: Scrutinizing the Evidence". Transgender Trend. March 2, 2019**



Damage NOT Reversible

Puberty Blocking effects on the pituitary can take 12-18 months to recover if blocker is stopped & temporary use may still cause permanent damage.

- **Normal Bone Density - LOST**
- **Psychosocial Milestones - LOST**
- **Sex Steroid Organization of brain - Impaired**

Cross Sex Hormones

10-40X over Normal Adult Female Levels

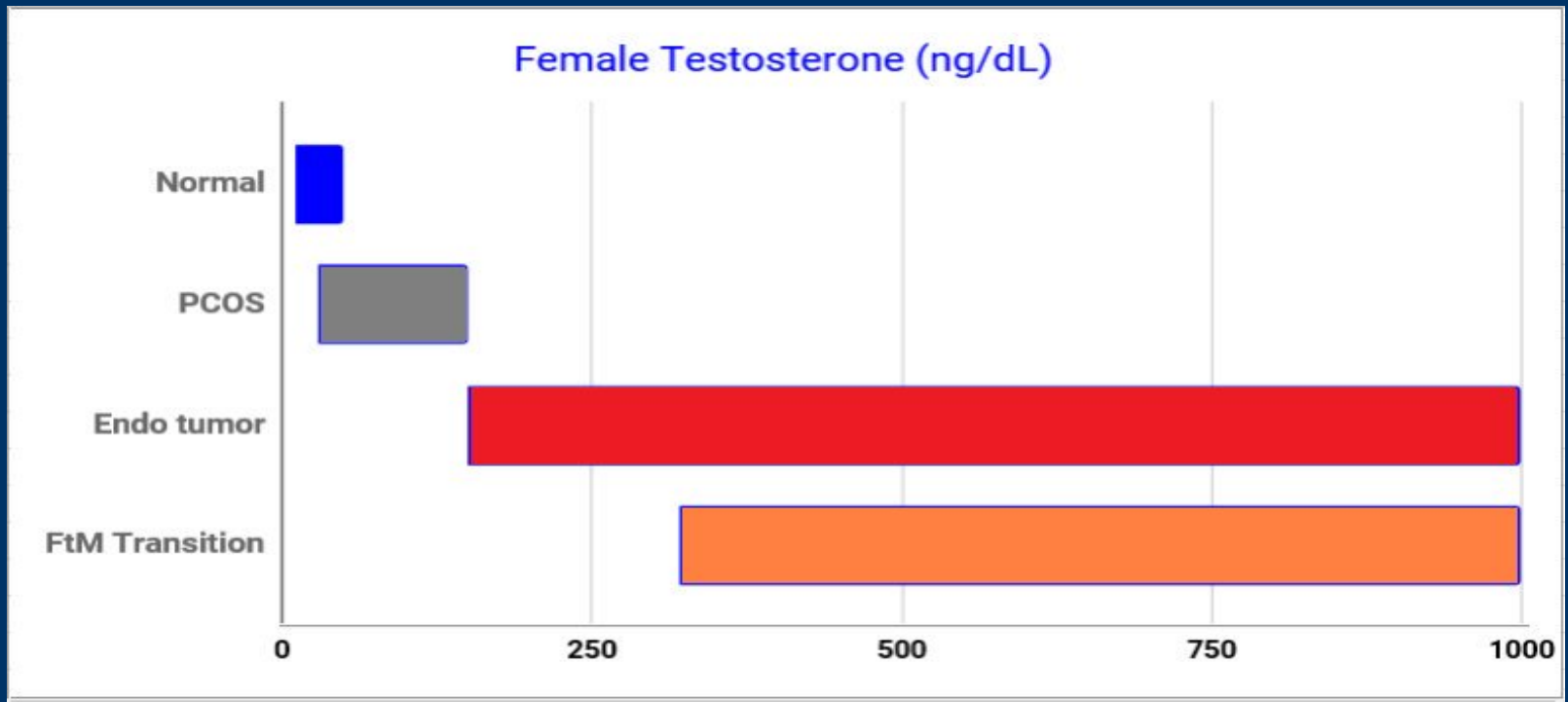


Image by Michael K Laidlaw, MD

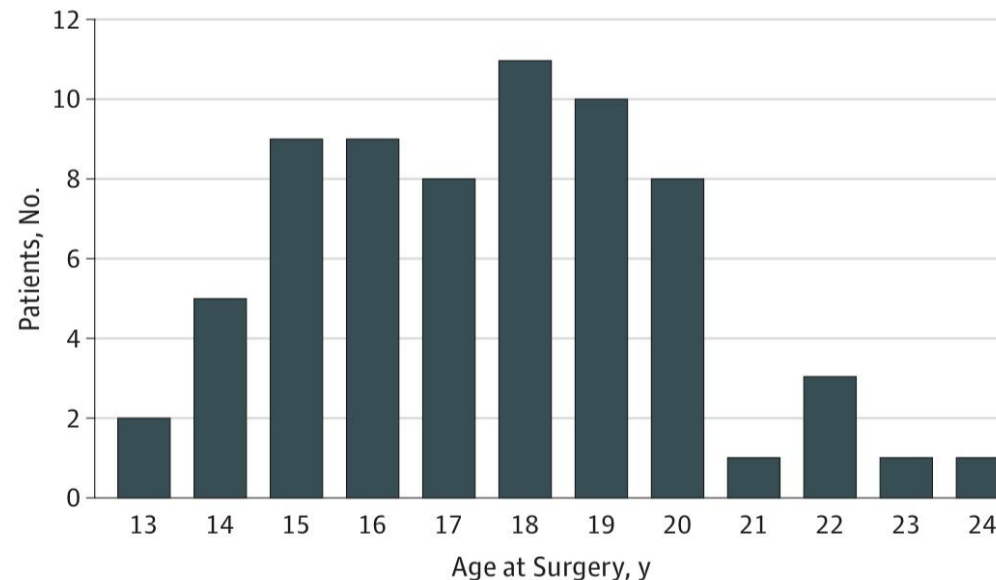
Approximate total testosterone in ng/dL based on laboratory, etc. FtM from 2017 Endo Society Guidelines on Gender Dysphoria

Side Effects of Cross (Wrong) Sex Hormones

Males on estrogen	Females on testosterone
Increased risk of heart attacks &	Cardiovascular deaths
Thromboembolism 5X risk	Erythrocytosis
Strokes 2X risk	Severe liver dysfunction
Gall stones	Hypertension
Hypertriglyceridemia	Breast Cancer
Breast Cancer	Uterine & ovarian cancer
Gynecomastia	Hirsutism, deepening of the voice

Female Surgical Mutilation: Double Mastectomies on 13 yo Girls Hysterectomies in 16 yo Girls

Figure. Age at Chest Surgery in the Postsurgical Cohort



Graph includes all study participants who had undergone chest reconstruction (n = 68).

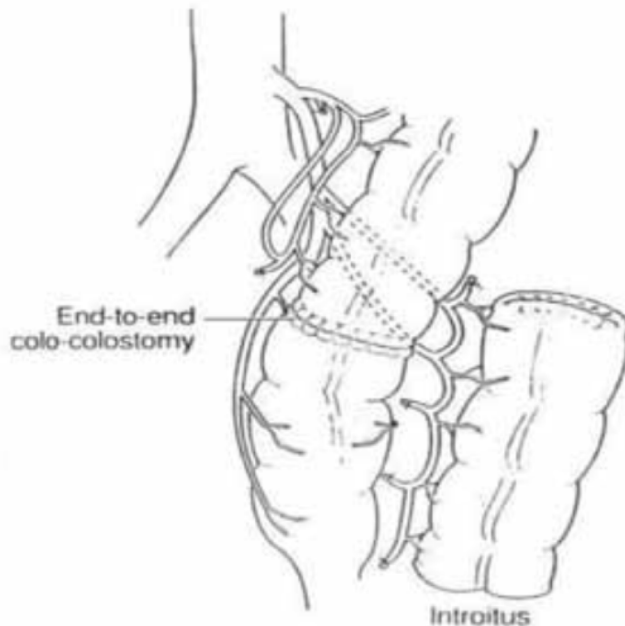
Olson-Kennedy J, Warus J, Okonta V, Belzer M, Clark LF. Chest Reconstruction and Chest Dysphoria in Transmasculine Minors and Young Adults: Comparisons of Nonsurgical and Postsurgical Cohorts. *JAMA Pediatr.* 2018 May 1;172(5):431-436.

Male Surgical Mutilation: Castration, Penectomy & Genital Wound

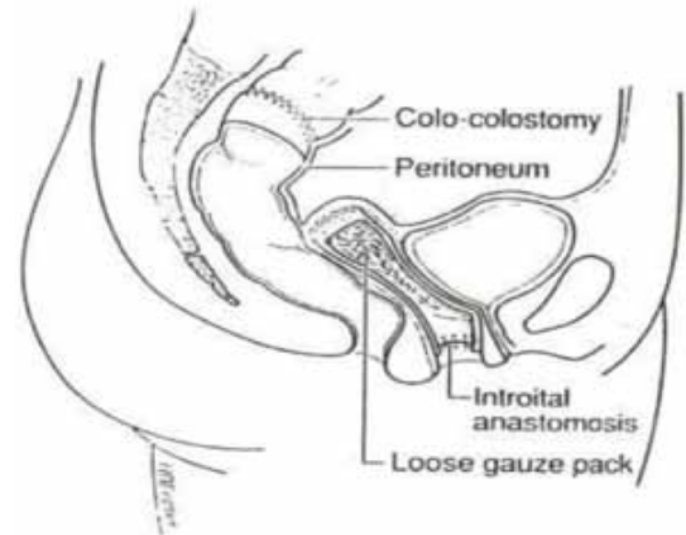
Figure 2 A and B - (A) Colocolostomy has been completed and the distal end of the colonic segment has been anastomosed to the opened rudimentary vaginal pit, (B): The peritoneum was closed above the transposed bowel and the neovagina was loosely packed with Vaseline gauze.

A

INTESTINAL VAGINOPLASTY



B



The Sterilization of Emotionally Troubled Youth

Puberty Blockers

+

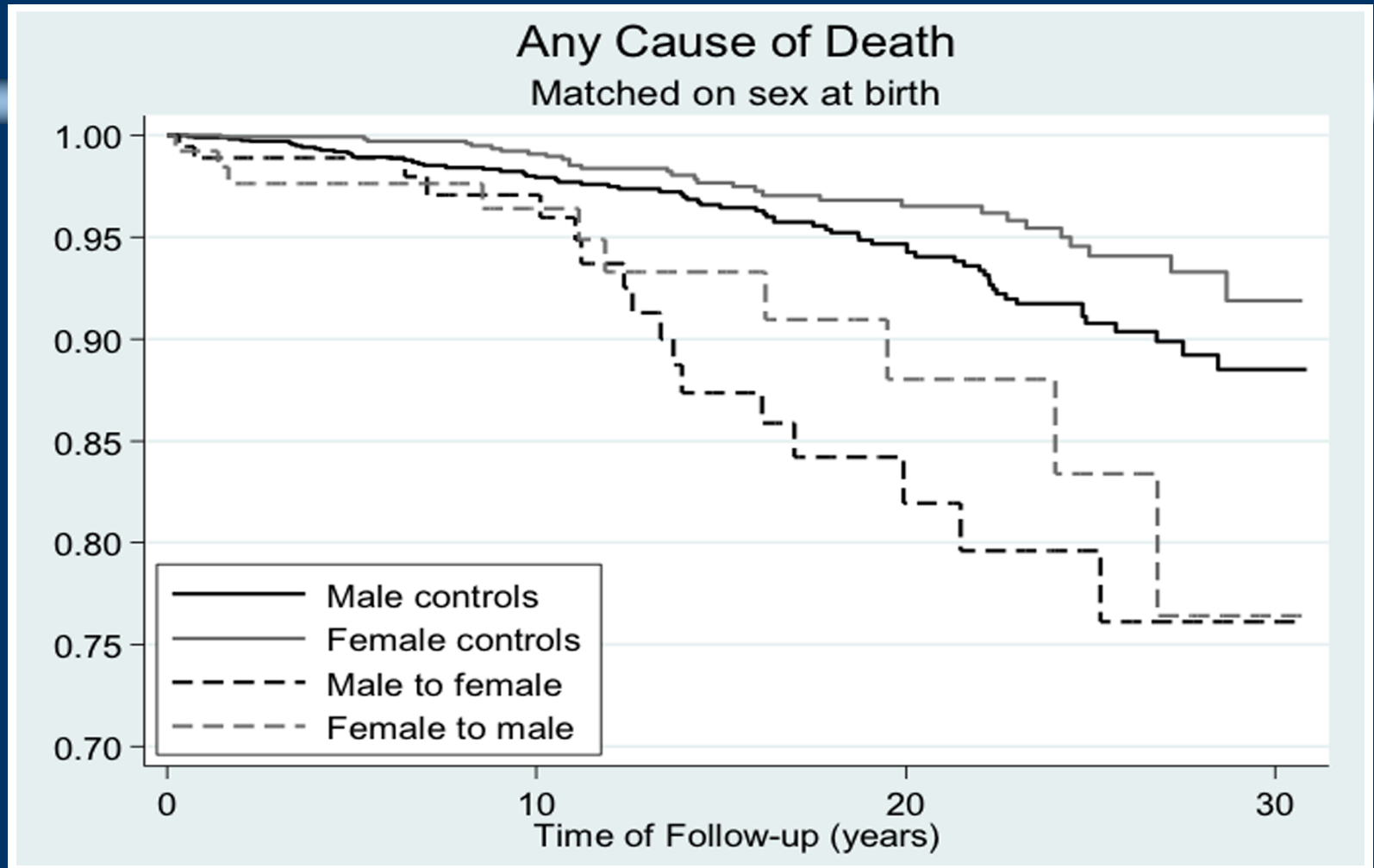
Cross Sex Hormones

Genital Surgeries



Sterilization

Long Term Mortality Cross Sex Hormones and Surgery



Dhejne C, Lichtenstein P, Boman M, Johansson AL, L'angstr'om N, Land'en M. Long-term follow-up of transsexual persons undergoing sex reassignment surgery: cohort study in Sweden. *PLoS One*. 2011;6(2):e16885



Medical Fruit of the Sexual Revolution

- 1) Disease**
- 2) Despair**
- 3) Death**

The Antidote

Faith, Reason & Science

